



PVRC Newsletter

July 2016

President's Letter – Bud W3LL

Hello PVRC! We're on a streak with June having been a great month for PVRC.

It began with the PVRC Reunion. Thanks to Tim N3QE, our secretary, for a rules update along with Q&A sessions. Most importantly it was a fun turnout. Tim continued the successful approach of having two four hour nights, first with CW and SSB on the second night. I know I had fun working PVRCers far and wide with just a dipole antenna.

In early June the PVRC 5M 20 FOR 20 Award was introduced - a once in a lifetime award. This one requires planning on your part. So take advantage right from the start with the NAQP RTTY contest and the CQ VHF contests both scheduled for the weekend of Saturday 16 July. With the right planning you can get two for one in one weekend. Don't forget to plan for this one.

Stay tuned for an expansion of the 5M awards. Our former secretary Vic W4VIC suggested one for the 5M Little Pistols. Your officers immediately jumped on that idea and are in the middle of the design project. Bill N3RR ran the numbers showing this will likely be a big winner affecting quite a few members.

Later in the month Kayren and I, along with the many attendees, had a great time at the 31st edition of the W3LPL Open House. The weather was spectacular for this event.

I had the privilege to receive on behalf of PVRC the ARRL Certificate of Merit award for PVRC's Outstanding Service to the Amateur Radio Community. The presentation was by ARRL Section Manager Marty Pittinger KB3MXM with Tom Abernethy W3TOM ARRL Atlantic Division Director in attendance.

In keeping with our now established tradition of presenting member awards locally, I was honored by NW chairman

Jim WX3B who presented me with the 2013 WAEDC plaque. Thanks! Similarly, our Secretary Tim travelled to the Rappahannock chapter meeting hand carrying awards to be presented by chapter chair Larry K7SV.

After writing the above paragraph I learned of the weather related damage at W3LPL. Fortunately neither Frank nor Phyllis were injured.

You'll likely be reading this column after Field Day. I'll be doing the overnight tour at the W3AO Field Day site in the RTTY/PSK-31 chair. Hope you all had fun in this event and that I was able to work all of you. More to follow in next month's edition.

Looking forward to next weekend July 02-03, it's the DL-DX RTTY Contest which will be held from 1100 Z to 1059 Z (24 hours). This Contest does have club competition. Please list Potomac Valley Radio Club as the name of the club when you submit your log. It is an excellent opportunity to tune up your RTTY skills and station for the start of the first 5M 20 FOR 20 award later in the month, so let me spend a little time here:

You should be able to find a category (time and equipment available) you can comfortably work into your schedule for the weekend. The full list of entry categories can be found [here](#).

The club competition rule is very loose as to what constitutes a club as can be seen from the excerpt from the rules: "Club competition: For a club to be listed, the following conditions must be met: At least three different entries from members of the club must be submitted. All members wishing to be included in the club score must indicate the club name in their log."

Good luck and have fun in the Contest!

Again looking forward are the IARU and IOTA contests. Although not 5M contests both are very popular.

Fowlfest comes up in August. A regional event hosted by Jim W3NRJ at this home.

Now to the anticipated look at the sports section and see how our members did this month in the contest arena:

PVRC'ers were back in action this month after a lull with no 5M contests.

Almost 60 PVRC members competed in various categories (and there sure are a lot of them) in the WPX CW contest. What a difference a year makes as the high bands were not nearly as productive as a year ago, as we march toward the bottom of the sunspot cycle. Team KE3X (K2YWE, K3RA, KD4D, KE3X, W2CDO, WR3Z) using the N3HBX Poolesville station put up the #2 US M/S score. Other high places include N3QE, at #1 US in SO(A) AB (TS) HP with a score just under 5M. In SOAB HP, KT3Y operating at KP2M came in at #4 world. Other big scores in this category were posted by N4AF (as NY4A) at 8.1M and N4YDU (as NR3X) at 6.8M. K4QPL (@VP5M) came in at #3 world in SOAB (TS) LP. The W4AAW remote station was once again piloted by KU1CW with a score of 2.4M. Of special note were accomplishments by two PVRC Rookies: W4FS (as WU4NC) coming in at #1 in his category and AB3WS with a nice score of 319K in SO(A) AB (R) QRP. Among the single band players were N8II making over 600 Q's on 15M HP and AB3CV proving that sometimes it just pays to show up, with a #1 US spot in SO (A) 80M HP. Finally, putting to bed the notion that all PVRC stations have gigantic antennas, kudos to W4GDG and K4FTO for their nice efforts using 10W and 100W respectively with only indoor antennas!

The June ARRL VHF contest featured terrific openings on 6M this year. 37 PVRC members took advantage of the conditions in this contest. Four PVRC members (W3IDT, W3YOZ, WR3Z, W3BTX) operated at W3SO, finishing in 3rd place in the category. Some notable SO scores include K1RZ at 223K, N3HBX at 160K, N3MK at 65K and K1HTV at 60K, all in SO HP. N3ALN put up a nice score in SO 3 Band LP as well. And continuing the theme of noting those using less than optimum antennas, the record shows that W3LL and K3TN both used an 80M-6M Carolina Windom, N3UM (@K3CCR) was using a 40M inverted V on 6M, K4FTO was using attic mounted yagis, AB3WS used a multiband inverted V and N8HM proves you can work from an

apartment, using antennas mounted on his balcony for a three band entry.

And as the late Billy Mayes would say, "But wait - there's more!" WJ9B, K3ZO N4CW and K7SV all braved the low SFI to play in the All Asia CW Contest. WJ9B finished 4th in the US SO HP with 965 QSO and a score of 305K. In the Summer Stew, N3QE, N1LN, N3HEE, K4FTO and AB3WS all enjoyed pretty good summer conditions on top band. Duly noted is that QRP maven AB3WS finished first in QRP. Finally, N8II appears to have blown away the competition in the WV QSO Party with 365 QSO and a score of 28K. No one else reporting to 3830 was even close.

Until next month this is Bud W3LL signing off with a 73.

<u>PVRC Officers:</u>		<u>Trustees:</u>	
President:	W3LL Bud Governale	K3MM, N3OC, WX3B, W4ZYT, N4NW, K2AV, KE3X, K4ZA, K3WRY	
Vice President:	K3AJ Tom Valenti		
Vice President:	W3TB Tom Edwards		
Secretary:	N3QE Tim Shoppa		
Treasurer:	N3RR Bill Hider		
		<u>PVRC Charter Members (all SK):</u>	
		W3GRF, W4AAV, W4KFC, N0FFZ, W4LUE, W7YS, VP2VI/W0DX, W3IKN, W4KFT	
PVRC Website: http://www.pvrc.org			

Efo Tornado Takes Down W3LPL 200' 10M Tower

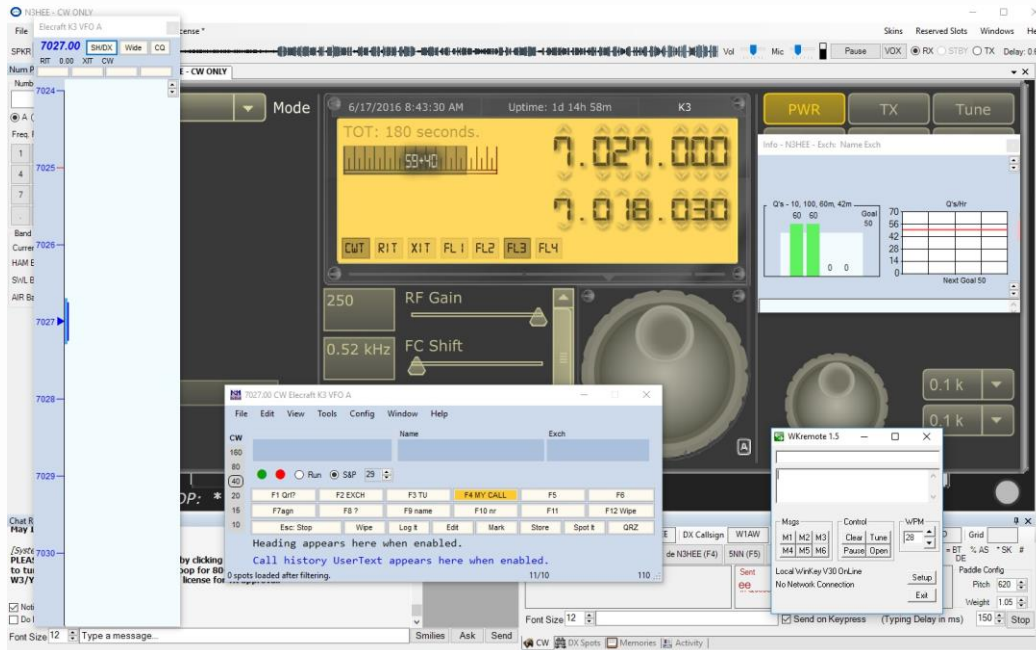


From Frank W3LPL via Facebook: “On June 21 our home was ground zero for an EF00 tornado (80 MPH sustained winds at the international standard 10 meter measurement height). The wind speed at the top of this destroyed 200 foot AB-105 tower was at least 105 MPH. The failure was apparently caused the guy wires imparting vertical forces on the tower legs exceeding their column load capacity. Plans are underway to install a new 200 foot "heavy duty AB-105" replacement tower during August.”



Remote Contesting – Joe N3HEE

Since getting my remote base up and running with [RemoteHams](#) software I decided to give contesting a try via remote control. I have only been playing with my remote setup for less than a week so I am pretty new at it.



I quickly found that CW ragchewing via the remote worked extremely well - almost like sitting at the radio. The audio is superb, latency is very low. All the audio and coms connections are handled by one easy to install and use software package. You can even control amps, rotators and other switching from the client software. No messy VPN, RDP, TeamViewer, Skype configurations to worry about. Just fire up the client software and connect to a remote radio of your choice. They really have made significant progress with this software over the past few years.

How well would it work for contesting though? I wasn't expecting much. Boy, was I surprised! The remote client has a handy built in K3 com port emulator for third party software connections. I was quickly able to get N1MM+ talking to my remote client software with very minimal effort and configuration. I had to use KY CAT commands in N1MM to send CW because I don't have serial keying working on the server end yet. It's a little clunky and funky but works OK once you figure out what to expect. For example, ESM mode does not work well when running because it won't stop the running CQ immediately once you enter a call sign. So I used function keys to run. However, ESM works fine for S&P.

Once I got settled in and used to using function keys I was good to go. I could do everything I could as if I was connected directly to my radio. I could hear well and other stations could hear and copy me fine. I could respond very quickly due to the low latency of the connection. I stayed on 40 meters and tested both running and S&P. I only made 40 Q's but really had a blast doing it remotely in the comfort of my bed.

I would imagine this would be really great while on vacation or on the road. Also good for antenna and/or radio challenged hams to have some fun with contesting or ragchewing. Maybe even multi-single contesting?

Give it a try sometime - you'll be surprised. Did I mention this is all **free**?! Full info [here](#).

Virginia Meeting of the Over the Hill Lunch Bunch – Roger K5VRX



Counter-clockwise from the front: K5VRX, N3JT, WA2BCK, W2YE, K3GEN, K4HQK, CX1EK, K3SC, N4RA, K3ZO, K3XA, W0YVA, W3YY.

VP5M 2016 CQ WW WPX CW– Jim K4QPL

Wow! Getting on the air from Turks & Caicos Islands after more than a year of planning and construction work was an unforgettable experience. This was my first time operating a major contest from anywhere besides home and the NC multi stations - it won't be my last! Arrived there on Tuesday to get the 3 element SteppIR 6-20M yagi assembled on an AB-577 mast. Jody VP5JM is our neighbor and offered her assistant Frandy to help get the antennas up.



View towards NA and EU from VP5M

We only raised the AB-577 to 30' above terrain as the site is about 100' ASL steeply sloping North to the ocean about 1500' away. We also hung a Unadilla 80-40 trap dipole as an inverted V. Preliminary QSO's proved everything was working and playing well.



Mast with SteppIR and Inverted V

Started the contest on 20M. I'm not great with pileups. On multi teams I always let the top ops open. But this was ShowTime, I was on and totally unprepared for the wall of callers. Hung in there peeling them off one at a time and got my best rate in the first hour. 20 held up well throughout the contest and was the "money band" for me. Distant lightning flashes Friday and Saturday nights proved my ears were not creating the QRN.

80M was pretty much unworkable without an RX antenna. 40 was slow with QRN but propagation OK. Don't have the stamina for long hours of BIC so slept from about 0430 to 0830. 40M was quieter in the morning with good propagation to far East until 20 came up about 1000Z. Stayed on 20 with lots of breaks as 15M was a disaster and there was no other choice during the day on Saturday. QRN Saturday night so QRT early.

Sunday started with a steady stream of JA's on 20 which boded well if only 15 would open. After a mid-day break 15M finally opened with a vengeance for me at about 1800. The pileups were heavy and I began to see the possibilities. Six hours of world-wide runs would salvage a decent score. That was not to be. All went well until 2142 when a humongous thunderstorm arrived with lightning, pounding rain and 50mph wind gusts. I just had time to say sorry and QRT, throw the cables out the door and watch to see if the newly erected antennas would stay up. They did. The lightning only died down and I was back on the air about 2350. Got the last 20 Q's in the log of CQ-WPX CW 2016 @ VP5M.



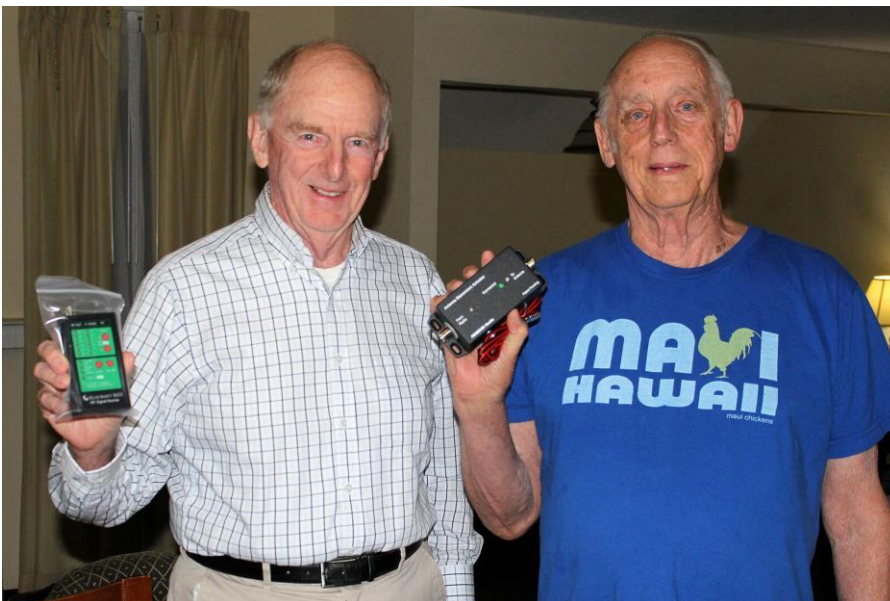
K4QPL running them on 15

Thanks to everyone for all the Q's, your patience in pileups, and bearing with the QRN induced need for fills.

Dayton Photos – John K4HQB



Ted Mayo K4BBA (ex-USAF) and Davy Plexico K4HR prepare to tour one of Dayton's premier museums.



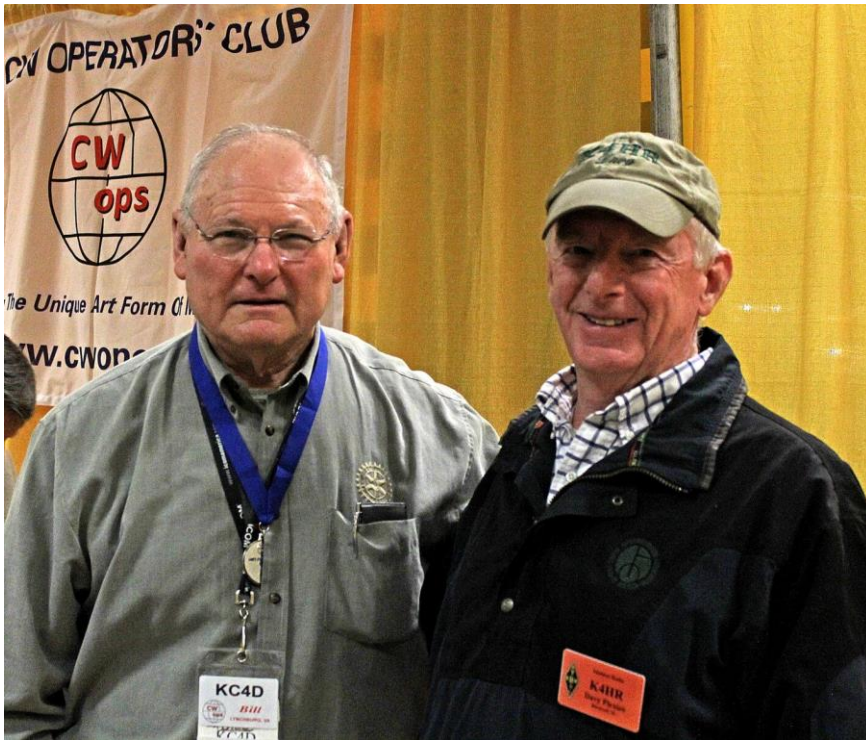
Davy K4HR and Ted K4BBA proudly display their gizmo prizes won during the DX Dinner drawing.



Don AA1V, Bruce K1AJ, Jim N3JT, ??? and Don N1DG at the CW Ops booth.



CW paddle heaven – the lineup at the Begali booth



Bill KC4D and Davy K4HR at the CW Ops booth.

2016 PVRC Reunion on the Air – Tim N3QE

The 2016 PVRC On-The-Air Reunion was active the nights of June 3 and June 4. Thanks to all 58 PVRC'ers were active in the reunion. In particular I want to note the joy in finding so many far-flung members who participated. As we say, "Once A member, Always A Member!.

The out-of-circle members on the air for the reunion included:

- Ray W2RS in Arizona
- Bob K3EST and Roger N3RC in California
- Jose EA5DFV in Spain
- Brian K3KO, Tom K3TW and Jim W4EE in Florida
- Hal N4GG in Georgia
- Dave KZ1O in New Hampshire
- Mel W3MR in New York
- John N8UM in Tennessee
- Phil KT3Y in the Virgin Islands at KP3M
- Mark WH7W in Hawaii

The deadline for log submission has been extended through the end of July 2016! You can E-mail your 2016 Reunion logs and/or score summaries to tshoppa@gmail.com. Please put your call and "reunion" on the subject line.

Membership News – Tim N3QE

PVRC added one member in the last month – please welcome Mike W3MBC in the Northwest Chapter:

Chapter leaders please remember to complete the [Meeting Attendance Report](#). Members can check and update their roster details via the [Roster Lookup](#).

Upcoming Contests and Log Due Dates

Contests This Month

July 1 – RAC Canada Day
July 2 – DL DX RTTY
July 9 – IARU HF
July 16 – NAQP RTTY
July 16 – CQ WW VHF

Logs Due This Month

July 1 – Baltic Contest
July 13 – ARRL VHF
July 20 – All Asian CW
July 26 – Field Day

See WA7BNM's [Contest Calendar](#) for more detail and the latest information.

The Editor's Last Word – John K3TN

Thanks to John K4HQK, Joe N3HEE, Roger K5VRX and Jim K4QPL for submissions for this month's newsletter. The Newsletter will be taking the month of August off – see you in September! Send contributions to jpescatore at aol dot com.

From the PVRC Treasurer – Bill N3RR

PVRC has chosen not to implement an annual Dues requirement. We depend on the generosity of all of our club members to finance our annual budget. In addition, active PVRC members are expected to participate and submit logs for at least two PVRC Club Competition contests per year.

When contemplating your donation to PVRC, each member should consider the benefit you are receiving from PVRC and its many opportunities for your personal growth in our wonderful hobby, then donate accordingly.

Direct donations to PVRC via Credit Card or PayPal may be made by clicking this "Donate" button and clicking the next Donate button that appears on your screen:



Donations to PVRC are not tax deductible

Eyeball QSO Directions

The latest info on local club meetings and get together will always be sent out on the [PVRC reflector](#) and posted on the PVRC [web site](#).

NW Region: Meetings are generally held on the third Tuesday of each month at: [Chef Lin](#), 417 S Jefferson St. Frederick, MD 21701 Phone #: 301-620-0664(2675)
The meeting begins at 7:00 PM.

Contact: Jim [WX3B](#)

DC Metro: Meets monthly the second Monday of each month, except June, July & August). The location alternates between the below MD and VA locations. Pre-meeting dinners start at 6:00 pm and meetings start at 7:30 pm.

VA LOCATION: Anita's, 521 E. Maple Ave, Vienna, VA. Tel: 703-255-1001. Meets at this location during the months of February, April and October.

Contact: Rich [NN3W](#)

MD LOCATION: Max's Café. 2319 University Blvd W, Wheaton MD 20902. Tel: 301-949-6297 People usually begin arriving at the restaurant around 6:00. Meets at this location during the months of January, March, May, September and November. Contact: Art [K3KU](#)

The Laurel, MD Region: Bill N3XL The PVRC get-together is held at the first [LARC](#) meeting each quarter at the clubhouse.

The Annapolis Crew: Dan K2YWE Meetings are held on the 4th Wednesday of each month at Broadneck Grill in Annapolis. We gather at about 5:30 PM and order dinner about 6. We break up usually before 8 PM. E-Mail [K2YWE](#) to be put on the e-mail reminder list.

PVRC-NC: The **PVRC-NC East** chapter meetings are held at [Manchester's Bar and Grill](#) on the 9100 block of Leesville Rd. in North Raleigh, with "QRM" beginning at 6:00pm and the dinner meeting following shortly thereafter. The meeting is held monthly on the 1st Thursday of most months, cancellations or changes usually announced on the [PVRC-NC website](#).

The **PVRC-NC West** chapter meets the 3rd Monday of each month (except December) at about 7:00 PM at Hams Restaurant, 414 S. Stratford Rd., Winston-Salem on the south end of the Thruway Shopping Center. We meet in the front meeting room of the restaurant. A wide variety of cold 801s and Sports bar menu available. Contact Henry Heidtmann [W2DZO](#), full info at <http://www.w4nc.com>

Over the Hill Bunch: The group meets for lunch at noon alternately in Maryland at the Sir Walter Raleigh Inn 6323 Greenbelt Rd, Berwyn Heights, MD or in Virginia at Anthony's restaurant in Falls Church. Meetings generally are held on the last Wednesday of the month and are subject to change. Meetings are announced by E-

Mail. All PVRC members, non-members interested in membership and guests are welcome. For information contact Roger Stephens, [K5VRX](#), 703-658-3991 for Virginia meetings; or Cliff Bedore [W3CB](#) or get on 147.00 for Maryland meetings.

Downtown Lunch Group: Meets at noon on the first Wednesday of the month in the downtown area of Washington, DC. Location: R.F.D. Washington, 810 Seventh St., N.W. Closest Metro stop is GALLERY PLACE-CHINATOWN (Red, Green and Yellow lines). Any changes will be sent out on the PVRC reflector. Feel free to contact Eric W3DQ or Brian WV4V for details and directions.

Southwest VA Chapter: The Southwest VA group meets each Wednesday at about 8:30 AM at Hardees at 20265 Timberlake Road in Lynchburg, VA. This is an informal gathering, but normally has about 10-12 attendees. Contact Mark Sihlanick N2QT, Tel: 434-525-2921

Eastern Shore Chapter: Meets every three months, on the second Saturday of April, July, October and January at noon. In keeping with the tradition established by SK Dallas W3PP we will also meet at the contest station of Eric WG3J one hour before the start of most major contests. Contact Eric Hudson [WG3J](#)

Location: Delmar Pizza, north west corner of the intersection of highways 13 and 54 in Delmar, De.

Southern Maryland Chapter: Currently on hiatus, if interested in meeting contact the Chapter Chair, Tom Shelton, [ND3N](#) via email or (240)

Colonial Capital Chapter: Meets the 2nd Thursday of each month at 8:30 am
Location: Hot Stacks Restaurant, 6495 Richmond Rd, Williamsburg, VA 23188
757-565-1105

Contact: Bill Conkling [NR4C](#)

The Tidewater Chapter meets the 3rd Tuesday of every month at Frankie's Place for Ribs located in the Fairfield Shopping Center on the corner of Kempsville Rd and Providence Rd in Virginia Beach. The meeting starts at 7:00 PM.

Contact either Chapter Chair: Don Lynch, [W4YZT](#), or Ron Young, [W8RJL](#) All amateurs are invited.

If you'd like to add or correct a listing, contact [K3TN](#) for inclusion in the Newsletter!

Now a Word From Our Sponsors

PVRC doesn't ask for dues, but the Club does have expenses. You can also support the Club by buying from the firms listed who advertise in the newsletter!

QSL CARDS By LZ1JZ

WWW.LZ1JZ.COM



By Scott KA9FOX

- Free Ham Radio Classifieds (most popular ham swap site)
- Low Cost Web Hosting, Email & Domain Name Services
- Web Design & Development

<http://www.QTH.com>



Your source for DX News!

The Daily DX - is a text DX bulletin that can be sent via e-mail to your home or office Monday through Friday and includes DX news, IOTA news, QSN reports, QSL information, a DX Calendar, propagation forecast and much, much more. With a subscription to The Daily DX you will also receive DX news flashes and other interesting DX tidbits. *Subscriptions are \$49.00 for one year or \$28.00 for 6 months.*

The Weekly DX - is a product of The Daily DX that can be sent weekly to your home or office via e-mail in the form of a PDF (portable document format). It includes DX news, IOTA news, QSN reports, QSL information, a DX Calendar, propagation forecast and graphics. *Subscriptions are \$27.00 for one year.*

Get a free two week trial of The Daily DX and The Weekly DX by sending a request to bernie@dailydx.com.

The Daily DX
3025 Hobbs Road
Glenwood, Maryland 21738
Phone: 410-489-651
Skype w3ur-bernie

ANAHEIM, CA
(Near Disneyland)
933 N. Euclid St., 92801
(714) 533-7373
(800) 854-6046
Janet, KL7MF, Mgr.
anaheim@hamradio.com

BURBANK, CA
1525 W. Magnolia Blvd. 91506
(818) 842-1786
(800) 854-6046
Eric, KA6IHT, Mgr.
Magnolia between
S. Victory & Buena Vista
burbank@hamradio.com

OAKLAND, CA
2210 Livingston St., 94606
(510) 534-5757
(800) 854-6046
Mark, W7YN, Mgr.
I-880 at 23rd Ave. ramp
oakland@hamradio.com

SAN DIEGO, CA
5375 Kearny Villa Rd., 92123
(858) 560-4900
(800) 854-6046
Tom, KM6K, Mgr.
Hwy. 163 & Claremont Mesa
sandiego@hamradio.com

SUNNYVALE, CA
510 Lawrence Exp. #102, 94085
(408) 736-9496
(800) 854-6046
Dan K6DN, Co-Mgr.
Howard, W6HOC, Co-Mgr.
So. from Hwy. 101
sunnyvale@hamradio.com

NEW CASTLE, DE
(Near Philadelphia)
1509 N. Dupont Hwy., 19720
(302) 322-7092
(800) 644-4476
Rick, K3TL, Mgr.
RT.13 1/4 mi., So. I-295
newcastle@hamradio.com

PORTLAND, OR
11705 S.W. Pacific Hwy.
97223
(503) 598-0555
(800) 854-6046
Leon, W7AD, Mgr.
Tigard-99W exit
from Hwy. 5 & 217
portland@hamradio.com

DENVER, CO
8400 E. Hill Ave. #9, 80231
(303) 745-7373
(800) 444-9476
John, N5EHP, Mgr.
denver@hamradio.com

PHOENIX, AZ
1939 W. Dunlap Ave., 85021
(602) 242-3515
(800) 444-9476
Gary, N7GI, Mgr.
1 mi. east of I-17
phoenix@hamradio.com

ATLANTA, GA
6071 Buford Hwy., 30340
(770) 263-0700
(800) 444-7927
Mark, KJ4VO, Mgr.
Doraville, 1 mi. no. of I-285
atlanta@hamradio.com

WOODBRIIDGE, VA
(Near Washington D.C.)
14803 Build America Dr. 22191
(703) 643-1063
(800) 444-4799
Steve, W4SHG, Mgr.
Exit 161, I-95. So. to US 1
woodbridge@hamradio.com

SALEM, NH
(Near Boston)
224 N. Broadway, 03079
(603) 898-3750
(800) 444-0047
Chuck, N1UC, Mgr.
sales@hamradio.com
Exit 1, I-93,
28 mi. No. of Boston
saalem@hamradio.com

Special Holiday Discounts Off Our Already Low Prices!



HAM RADIO OUTLET

WORLDWIDE DISTRIBUTION

**GREAT YAESU
WINTER SPECIALS
Through 12/31/06**



FT-897D VHF/UHF/HF Transceiver

- HF/6M/2M/70CM • DSP Built-in
- HF 100W (20W battery)
- Optional P.S. • Tuner • TCXO Built-in

Call Now For Our Low Pricing!



FT-817ND HF/VHF/UHF TCVR

- 5W @13.8V ext DC • USB, LSB, CW, AM, FM
- Packet (1200/9600 Baud FM) • 200 mems
- built in CTCSS/DCS • TX 160-10M, 6M, 2M, 440
- Compact 5.3" x 1.5" x 6.5", 2.6 lbs
- FNB-85 NiMH battery • NC-72B included

Call Now For Low Pricing!



FT-8800R 2M/440 Mobile

- V+UV+V/U-U operation
- V+U full duplex • Cross Band repeater function
- 50W 2M 35W UHF
- 1000+ Memory channels
- WIREs ready

Call Now For Low Pricing!



VX-2R 2M/440 HT

- World's smallest Dual-band HT
- w/ wide RX
- 1.5 W RF output
- WIREs compatible
- 1300 Memory channels

Call For Low Price!

FT-60R

- 2m/440 HT
- 5W Wide-band receive
- CTCSS/DCS Built-in
- Emergency Auto ID

Low Price!



VX-7R/VX-7R Black

50/2M/220/440 HT

- Wideband RX - 900 Memories
- 5W TX (300mw 220Mhz)
- Li-Ion Battery
- Fully Submersible to 3 ft.
- Built-in CTCSS/DCS
- Internet WIREs compatible

Now available in Black!

VX-6R

- 2M/220/440HT
- wideband RX - 900 memories
- 5W 2/440, 1.5W 220 MHz TX
- Li-ION Battery • EAI system
- Fully submersible to 3 ft.
- CW trainer built-in

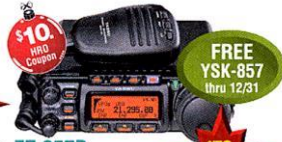
NEW Low Price!



VX-150

- 2M Handheld
- Direct Keypad Entry
- 5w output
- 209 memories
- Ultra Rugged

Call Now For Special Pricing!



FT-857D

- Ultra compact HF, VHF, UHF
- 100w HF/6M, 50w 2M, 20w UHF
- DSP included • 32 color display
- 200 mems • Detachable front panel (YSK-857 required)

Call for Low Price!



FT-7800R 2M/440 Mobile

- 50w 2m, 40w on 440mhz
- Weather Alert
- 1000+ Mems
- WIREs Capability
- Wideband Receiver (Cell Blocked)

Call Now For Your Low Price!



FT-2000 HF + 6M tcvr

- 100 W w/ auto tuner • built-in Power supply
- DSP filters / Voice memory recorder
- 3 Band Parametric Mic EQ • 3 IF roofing filters

Call Now For Low Pricing!



FT-8900R Quadband Transceiver

- 10M/6M/2M/70CM • Wires capable
- 800+ memories • Built-in CTCSS/DCS
- Remotable w/optional YSK-8900

Call Now For Special Pricing

AZ, CA, CO, GA,
VA residents add
sales tax. Prices,
specifications,
descriptions,
subject to change
without notice.

Look for the
HRO Home Page
on the
World Wide Web
<http://www.hamradio.com>

**COAST TO COAST
FREE SHIPPING**
UPS - Most Items Over \$100
Rapid Deliveries From
The Store Nearest To You!



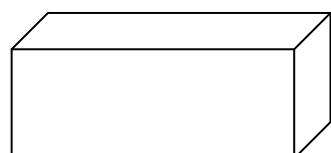
Attention: Contesters

7 Big Problems that are Probably Affecting Your Scores Right Now!

and

How The RF Connection's Mike-Link and
Shure® Legendary Performance™ Broadcast Headsets

Solve them ALL!



Your Radio

← Mic/PTT cable
RX Audio: L/R cable
From Footswitch →



The RF Connection's
Mike-Link

← Headset cable →



Shure BRH440M
Broadcast Headset

Problem #1: Foot Not Near Footswitch, QSO Missed

Solution #1

Use Your Finger Instead!

- Mike-Link finger-touch PTT
- Momentary SPST switch
- Positive tactile feel



Problem #5: Operating CW, you have a "pain in the head" after "Y" hours on-air

Solution #5 - Use Mike-Link

Periodically, Flip the Reverse/Inphase Audio Switch

- Reverses mono audio source for greater listening pleasure



Problem #2: You wear eyeglasses and you have a "pain in the temple" after "X" hours on-air

Problem #3: Brand 'Z' comfortable headset solves problem #2, BUT increases external background noise

Solutions #2 & #3

Use Shure BRM440M
Broadcast Headset

- External background noise isolating
- Closed back—noise isolating
- Gamer-style, circumaural (over-the-ear) ear cup pads



Problem #6: Special microphone is needed for your ICOM radio

Problem #7: External batteries needed when your ICOM-specific headset is used with other radio brands

Solutions #6 & #7

Use Mike-Link & Shure BRM440M

- Built-in, user-selectable, Active ICOM pre-amp
- External power/battery NOT required
- Built-in, user-selectable mic input impedance 2.5K or 10k

Call For Your FREE REPORT:

"The R.F. Connection's 'Mike-Link' and
Shure® Legendary Performance™
Broadcast Headsets"

Call Joel for your SPECIAL PVRC PRICE!

301-840-5477

Problem #4: "RF in your mic audio OM!"

Solution #4 - Use Mike-Link

Ferrite RF suppression chokes included on:

- microphone audio
- receiver audio
- PTT

New Products Added Every Day!

DX ENGINEERING®.com

NCC-2 Receive Antenna Variable Phasing Controller



The NCC-2 now combines the NCC-1 Phase Controller and our RTR-1A Receive Antenna Interface technologies into one box. It also has enhanced balance functionality, increasing its ability to phase between two different types of antennas. This is a handy feature if you've got space constraints on your property. We've also made it easier (and more economical) to expand the NCC-2's versatility by providing slots for internal plug-in modules, like the new plug-in versions of our Receiver Guard 5000 and RPA series preamplifier.



HF and VHF Yagi Antennas

Contesters have been clamoring for rugged, high performance antennas that won't break the bank. EAntenna's Yagi and dipole antenna designs deliver on all fronts. Here's a pair of the most popular models. They are available now at DXEngineering.com.

For HF operating, the [DY-MINI3B](#) is a 20/15/10 meter tri-bander that gives you impressive gain on each of the three bands—all with a boom only 12.5 feet long.

And for VHF, the [144LFA16](#) designed by G0KSC is a 16-element Yagi for the 2 meter band. It can handle full-legal power, and offers excellent gain characteristics and front-to-back performance.

Automatic Band-Pass Filter

Select from one of six band-pass filters with the simple push of a front-panel button. Introducing DX Engineering's new Automatic Band-Pass Filter. Having multiple filters in one box means you can quickly switch bands without the hassle of changing components in your signal path. The unit comes preloaded with filters for the 160, 80, 40, 20, 15 and 10 meter bands. When operated with less than 1.5 VSWR at the band-pass filter port, it will tolerate up to 200 watts transmit power.



New!



HF Antenna Systems

Bushcomm gear is ideally suited for emergency and portable duty, so it performs very well in mobile, base station, and marine applications too.

Bushcomm's [BBA100DXE](#) is a DX Engineering exclusive, delivering 80-10M coverage at a VSWR under 2:1. The HF broadband three-wire antenna handles 130 watts CW and 250 watts PEP. The wire length is roughly 90 feet.

For mobile operation, Bushcomm offers its [Highlander 8](#). It's an 80-6M whip that can handle up to 250 watts PEP. Carefully coiled antenna wire keeps the fiberglass mast's height under six feet. Want to change bands? Simply plug into a different tap.

DX Engineering supports the **CY9C St. Paul Island DXpedition**. Email Support **24/7/365** at [DXEngineering.com](#).

CY9C 2016
St. Paul Island



Extended Phone Hours!

Sales: 1-800-777-0703

Monday-Friday: 8:30 am to Midnight
Saturday & Sunday: 8:30 am to 5 pm

Tech: 1-330-572-3200

Monday-Friday: 8:30 am to 7 pm
Saturday 9:00 am to 2 pm

DXEngineering.com Online 24/7

All Times Eastern

Country Code: **+1** Sale Code: **1607PVRC**

DX ENGINEERING®